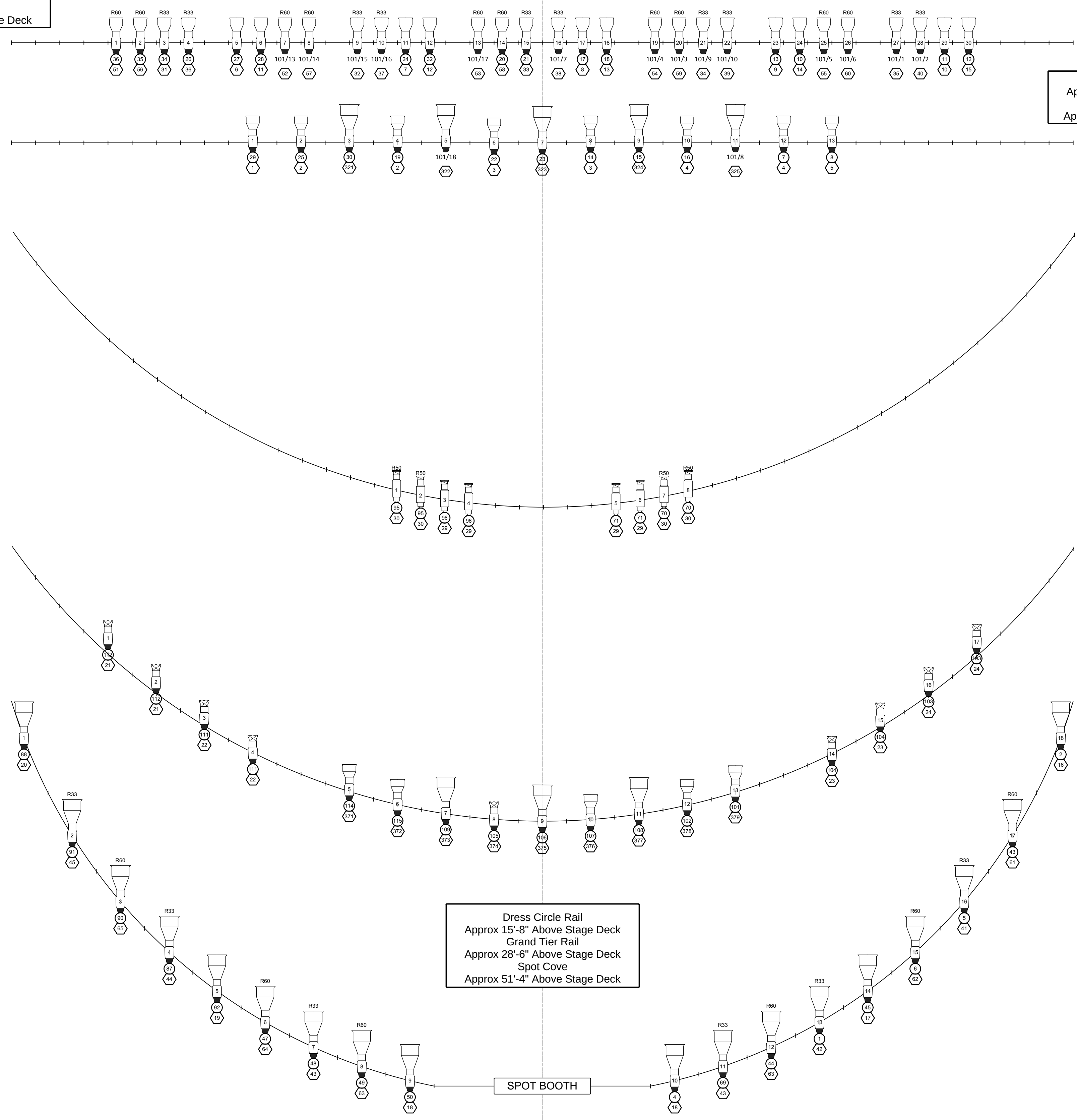
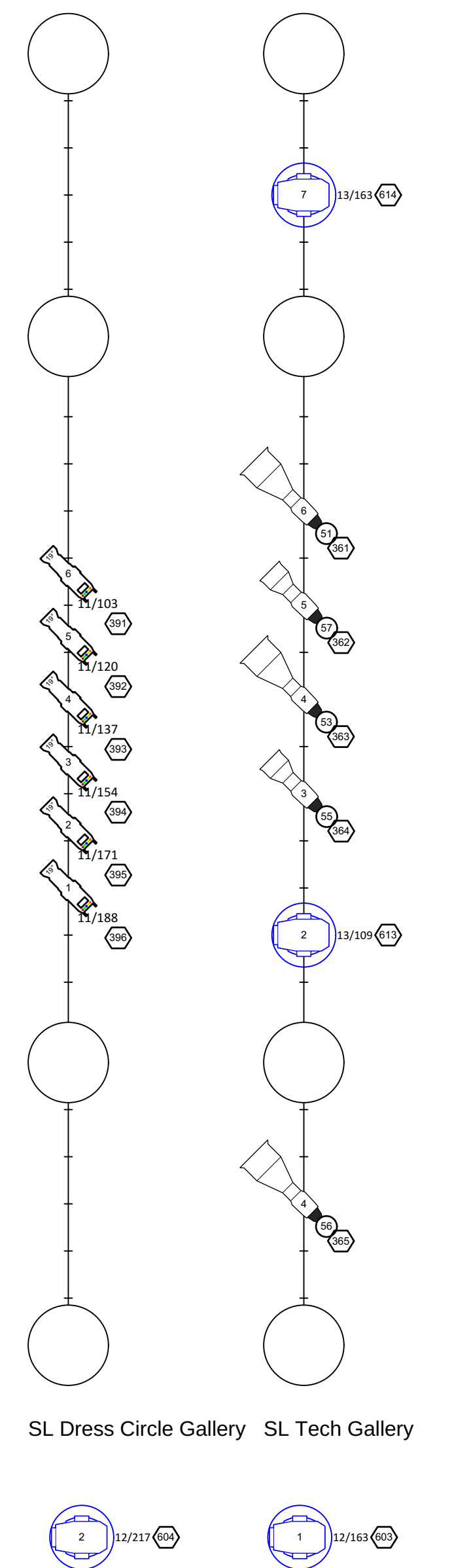


DC Gallery
 Approx 25'-6" Above Stage Deck
 Tech Gallery
 Approx 45'-6" Above Stage Deck



Bridge Bottom
 Approx 60'-5" Above Stage Deck
 Bridge Top
 Approx 64'-10" Above Stage Deck

Dress Circle Rail
 Approx 15'-8" Above Stage Deck
 Grand Tier Rail
 Approx 28'-6" Above Stage Deck
 Spot Cove
 Approx 51'-4" Above Stage Deck



Anheuser-Busch Performance Hall
 Repertory Light Plot
 Lighting Plot - Overstage
 DATE: 2023-03-09 SCALE: 1/4" = 1' on Arch D

L-02

Notes:

- Neither Booms nor Cyc Ground Row are in the rep hang
- Source 4 ERS and PARs are 750 watts unless noted otherwise
- Fixtures in Box Booms are obstructed by line arrays and cannot focus upstage
- High Side Gobos are Rosco 77806 Large Leaf
- Some channels may be twofored or patched at the discretion of the show electrician
- Boom units hang on sidearms extended onstage
- Boom Measurements are from the C-clamp to the ground

UMSL Touhill
 Performing Arts Center
 University of Missouri-St. Louis
 www.touhill.org

Jim Dolan
 Lighting Supervisor
 dolanj@umsl.edu
 314.516.4916